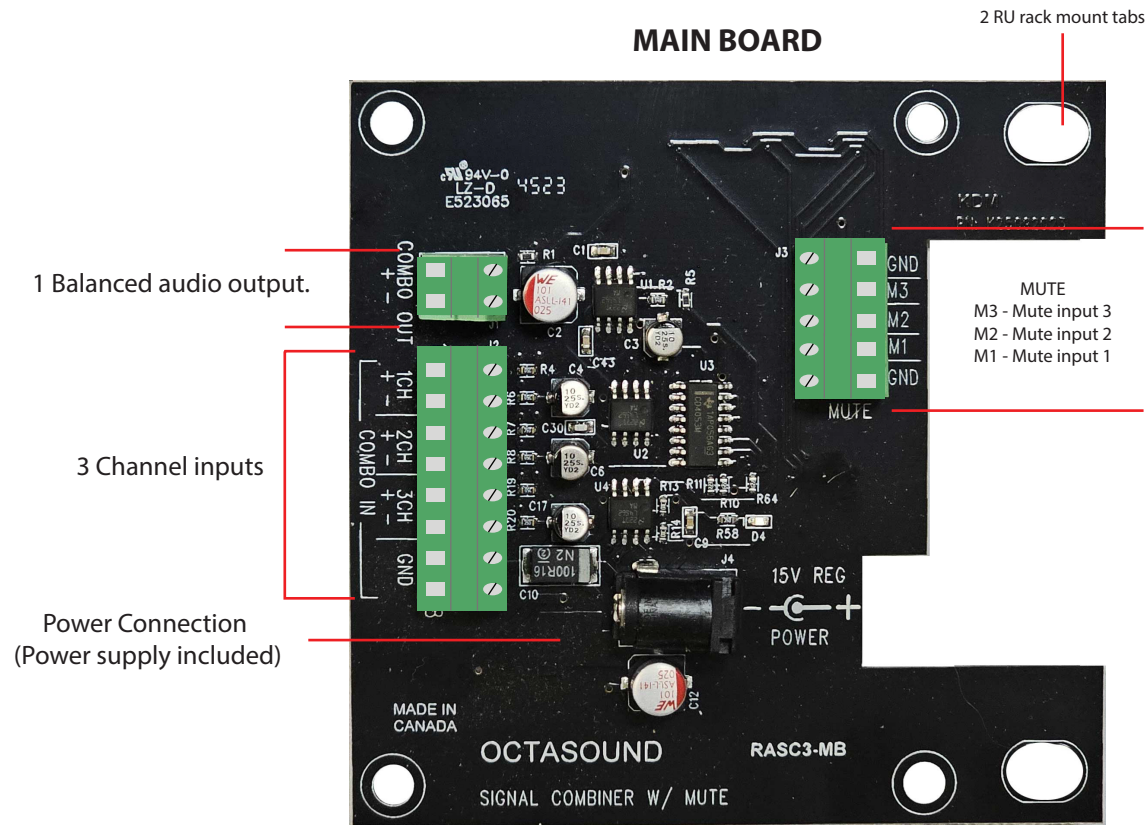


INSTALLATION INSTRUCTIONS - RASC3



Installation.

1. Mount the main board at the rack location using rack tabs or via standoffs provided.
2. Wire balanced signals to "COMBO IN" inputs. Up to 3 inputs.
3. Wire the balanced "COMBO OUT" to a balanced input.
4. Mute terminals M1, M2, M3 are normally open mute circuits. Using M1, M2 and M3 you can control on and off conditions.
7. Connect power. Board power LED should be lit.