

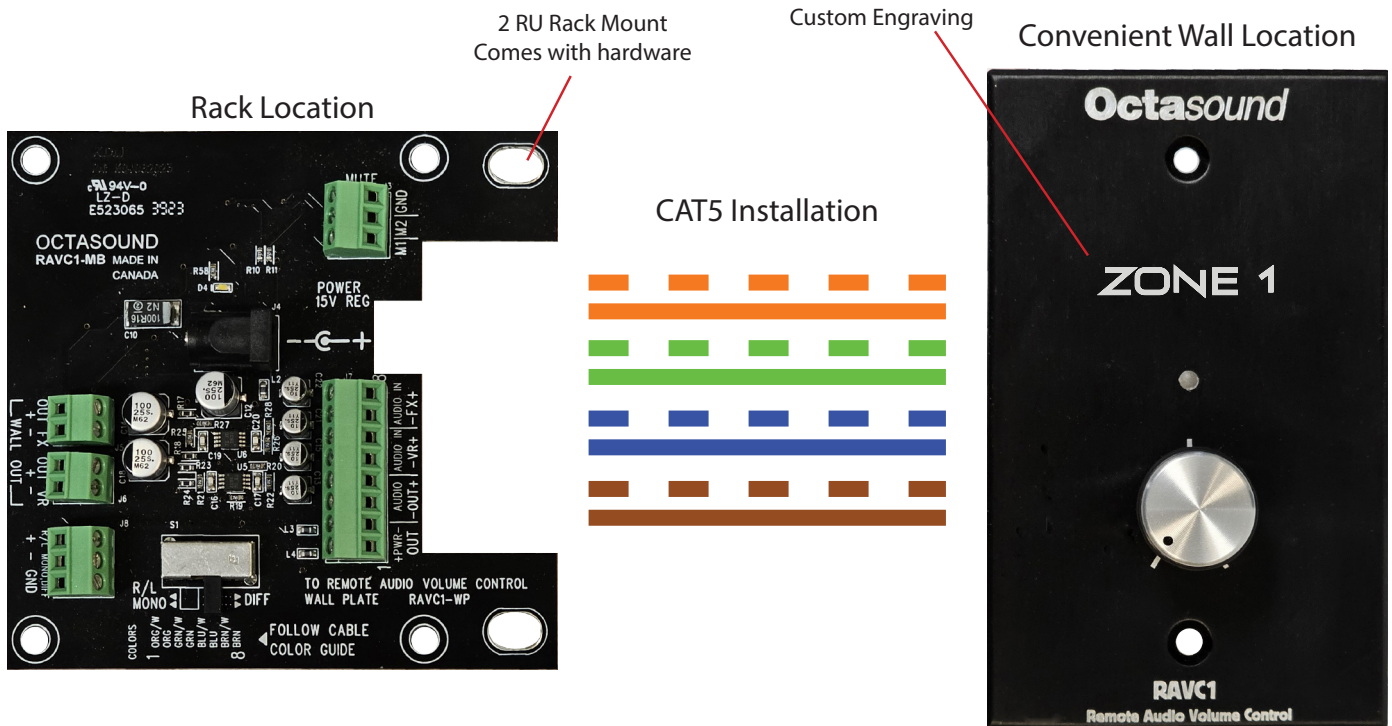
*Introducing the  
all new*

# RAVC1<sup>®</sup>

## REMOTE AUDIO VOLUME CONTROL

CONTROL AUDIO VOLUME ANYWHERE

PROJECTORS, TV'S, WIRELESS MICS, ZONE CONTROL  
AND MORE



- ✓ Volume control any line level balanced or stereo audio signal
- ✓ Use for in zone volume control adjustments
- ✓ Use for wireless microphones, televisions, background music etc.
- ✓ Mounts anywhere in the room / zone
- ✓ Custom engraved aluminum panel
- ✓ Ultra low noise, Interference resistant, SMT-based design
- ✓ Wall plate installs in a standard outlet or electrical switch box
- ✓ Main board easily mounts using rear rack tabs for convenient wiring
- ✓ Sealed volume controls with conductive plastic. Will not oxidize or corrode.
- ✓ Highest quality components throughout
- ✓ Intuitive simple to use interface.
- ✓ Power indicator LED - Main Board and Wall Plate
- ✓ Easy to wire terminal blocks with color codes on PC board for CAT5.
- ✓ Solid aluminum plate with etched markings will not fade or wear off
- ✓ Daisy Chain VIA CAT5 to existing Octasound Remote Audio Products (RAMX2, RABX2)
- ✓ Weather resistant design
- ✓ Power Supply Included



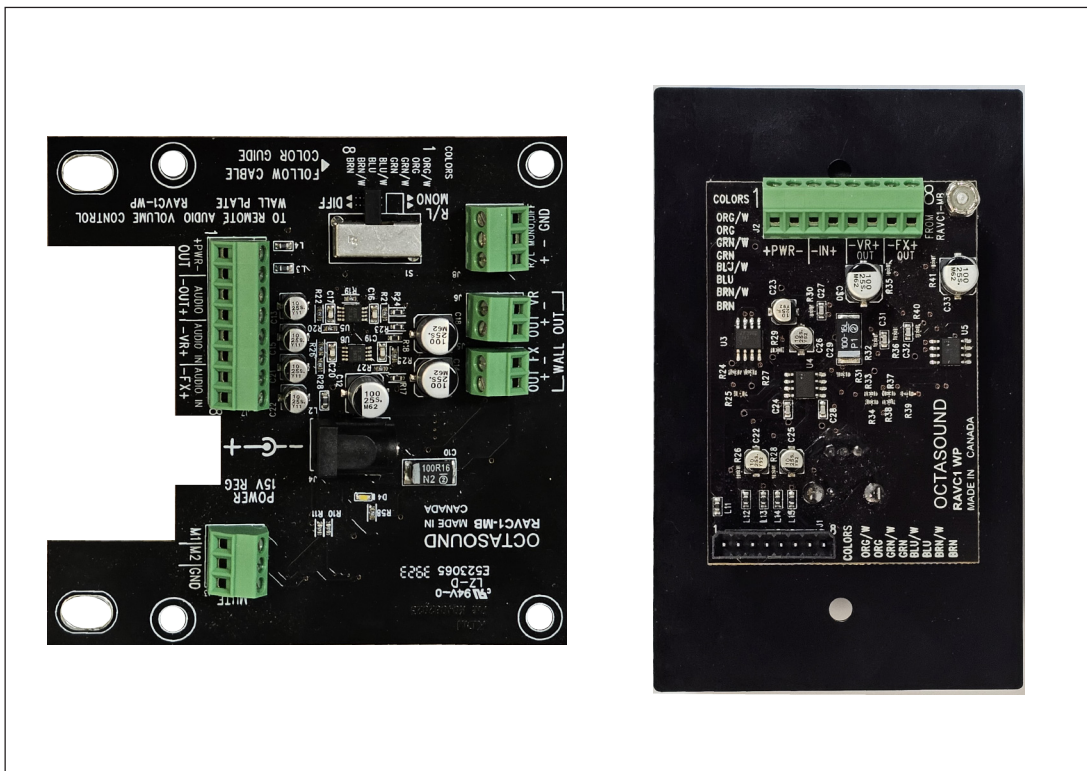
**Octasound**<sup>®</sup>  
SOUND ABOVE ALL

by **KDM**

# RAVC1<sup>®</sup>

## REMOTE AUDIO VOLUME CONTROL

### Technical Information



### RAVC1 Specifications

#### Technical Specifications:

Input Impedance:	Greater than 10 kOhm
Output Impedance	Designed to operate into 600 ohm balanced or unbalanced
Temperature Range:	-20 °C to 55 °C
Gain:	Balanced: 17dB (150mv to 1.0V) Variable and Fixed outputs. Unbalanced (L + R): 23dB (75mV to 1.0V)
Response:	± 1 dB 40 Hz to 15 kHz
Noise:	Greater than 75 dB S/N
Distortion:	Less than 0.3% at 1.0 volt output.

#### General:

Dimensions:	Main Board - 2.75" L H x 2.8 H Wall Plate - 2.75W" x 4.5" H x 1.75 T (Board depth 1" below plate) Mounts onto 2 RU Rack Mount Tabs / Hardware provided
Input Connector:	Terminal Block
Output Connector:	Terminal Block
Power Required:	Ac/DC Adapter 15V 800ma minimum (Included)
Power Connector:	Barrel Type Connector 2.1mm x 5mm
Daisy Connector:	Wall Plate - Strip and Insert type connector

For more detailed info contact:

KDM Electronics [www.octasound.com](http://www.octasound.com) [info@octasound.com](mailto:info@octasound.com) 1-800-567-6282  
55 Mills Road, Ajax, ON L1S 2H2