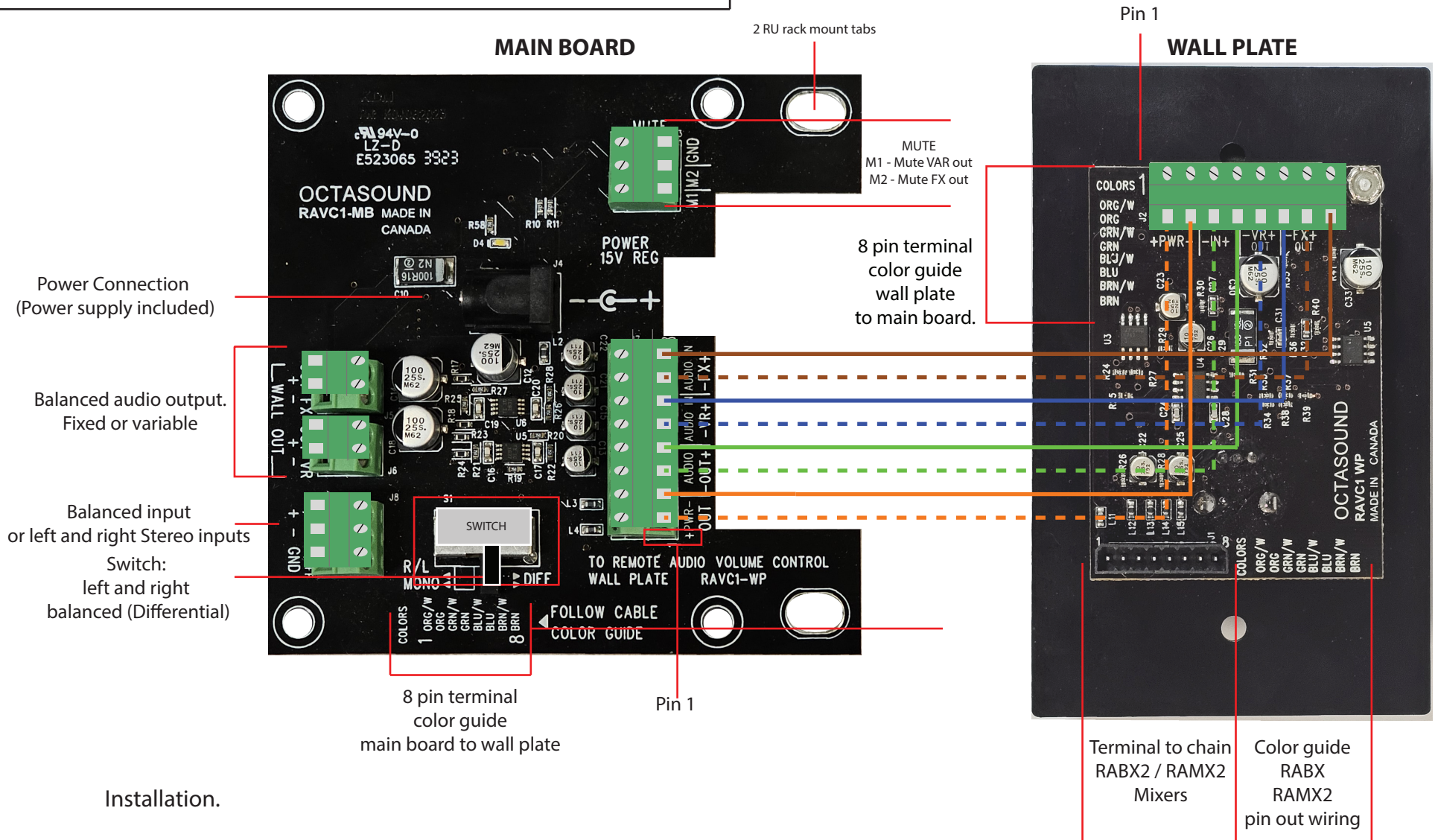


# INSTALLATION INSTRUCTIONS - RAVC1



## Installation.

1. Mount the main board at the rack location using rack tabs or via standoffs provided.
2. Wire the wall plate to the main board using CAT5 wire. Follow the color codes provide on each circuit board.
3. If you are adding a RABX2 or RAMX2 wire them into the black input terminal on the wall plate.
4. Wire the input as balanced or Left and Right stereo.
5. Wire the balanced output into the amplifier.
6. Wire any normally open contacts into the mute circuits. M1 mutes the variable output and M2 mutes the fixed level output.
7. Connect power. Both boards have a power LED.